

MANAGEMENT

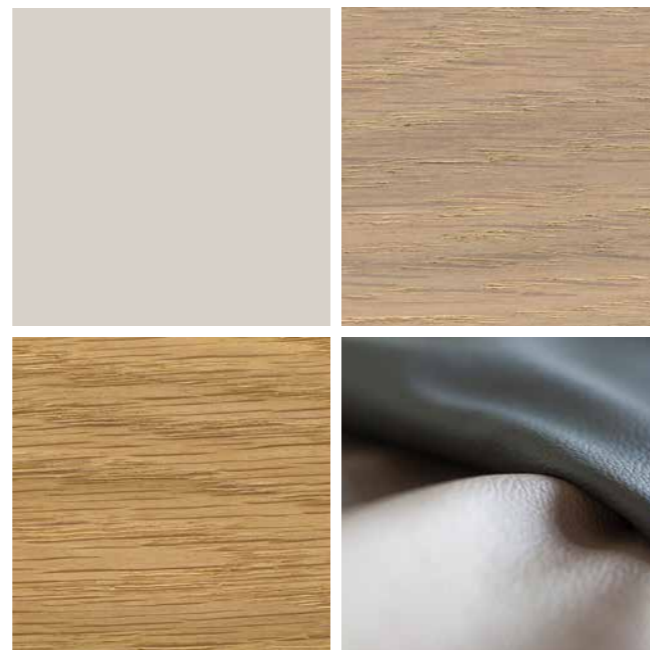
FOR YOUR
HIGHLY INDIVIDUAL
MANAGEMENT STYLE



Management is:
planning for tomorrow's
needs today

As the working world changes, so too does the management style of those responsible for making the decisions that count. In addition to an understanding of data, facts and figures, today's successful managers must also be able to communicate, show empathy and demonstrate social skills – all without losing sight of the big picture. Furthermore, they have to be able to address their employees on a personal level, foster loyalty and spur their development if they are going to remain agile and creatively react to customers and market changes.

An inspiring work environment is the key to achieving peak mental performance.



»The first step towards a better working culture is the choice of the correct furniture.«

FLEXIBILITY FOR MODERN *MANAGERS*



PRODUCTS:
TABLE.MANAGEMENT (T-leg), technical pedestal 1800 mm,
NET.WORK.PLACE



*Electric height adjustment
with display, memory function and
integral collision cut-out.*

TABLE.MANAGEMENT T-LEG

ARE YOU DRIVEN TO MAKE THINGS HAPPEN AND IMPLEMENT CHANGE? THE ELEGANT TABLE.MANAGEMENT WORKPLACE ALLOWS YOU TO SWITCH BETWEEN SITTING AND STANDING POSITIONS AT A MOMENT'S NOTICE – SO THAT YOUR MIND NEVER STOPS MOVING. THE INTEGRATED TECHNICAL PEDESTAL OFFERS PLENTY OF (STORAGE) SPACE FOR NEW PLANS AND IDEAS.

THE BALANCE BETWEEN CONCENTRATION AND *COMMUNICATION*



TABLE.MANAGEMENT A-LEG

BE IT CONCENTRATED WORK OR INTENSE DISCUSSIONS IN SMALL GROUPS - TABLE.A IS IDEAL FOR MODERN WORKING METHODS. ITS UNUSUAL AND ELEGANT COMBINATION OF A SPLIT TOP WITH AN EXTENSION IS THE PERFECT PLACE IN WHICH TO JOINTLY DEVELOP NEW STRATEGIES. HIGH-QUALITY CHARTA TASK CHAIRS ARE SURE TO IMPRESS WITH THEIR REMARKABLE SEATED COMFORT - EVEN IN LONGER MEETINGS.



PRODUCTS:
TABLE.MANAGEMENT A-leg, CHARTA task chair, ACTA.PLUS

CLEAR STRUCTURES FOR *DECISION-MAKING*



PRODUCTS:
TABLE.MANAGEMENT slab end, OKAY.II task chair, ACTA.PLUS storage, pedestal



TABLE.MANAGEMENT SLAB END

IMPOSING NEED NOT MEAN OVER-BEARING. THE SHADOW-GAP STYLING OF THE SLAB ENDS AND VENEERED TOP, JUST 13 MM THICK, GIVE THE TABLE.MANAGEMENT MODEL A LIGHT, ELEGANT LOOK. AN OPTIONAL SPLIT TOP MAKES IT PARTICULARLY EASY TO ACCESS THE CABLE TRAY, WHERE POWER AND DATA CABLES ARE STORED DISCREETLY AND TIDILY.

Sophisticated down to the smallest details



1 | DISCREET WIRE MANAGEMENT

Electrical cables are fed through the flexible cable sleeve and therefore remain invisible even when the desk is raised.

2 | DIRECT ACCESS

Split sliding tops simplify wire management.



3 | EASY ACCESS

The rear panel of the technical pedestal can be removed.

4 | INTEGRAL STORAGE

The CPU and handbags/briefcases are kept safe in specially-designed compartments.

5 | TIDY WIRE MANAGEMENT

Cables are routed from the cable tray in the desk directly into the pedestal.

6 | SAFE AND SOUND

The automatic locking system is transponder-controlled. A light diode shows the status with a red or green signal.

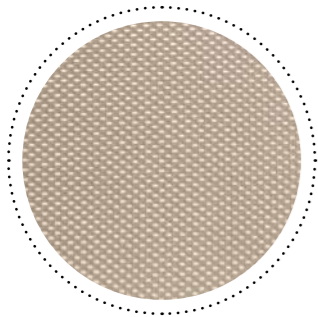
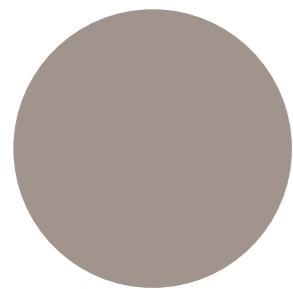
7 | VARIABLE SET-UP

A variety of accessories make the pedestal a real multi-talent when it comes to organisation: as well as full-extension drawers there are compartments for printers or laptops.

8 | CONTEMPORARY MEDIA HUB

The USB ports are fitted flush with the top and therefore easily accessible.

THE PERFECT SETTING FOR YOUR STRATEGIES



The elegant finishes can be combined perfectly – to create a high-quality, classic-modern look.

PRODUCTS:
SUMMA, OKAY.II, technical pedestal 1400 mm, ACTA.PLUS



SUMMA

THINKING OUTSIDE THE BOX, PURSUING VISIONS AND MAKING NEW THINGS REALITY: YOU CAN GIVE YOUR THOUGHTS FREE REIN IN THIS WORKING ENVIRONMENT. THE SOPHISTICATED AND TRANSPARENT DESIGN OF SUMMA MAKES A STRONG STATEMENT ABOUT YOUR COMPANY'S HIGH STANDARDS AND CORPORATE CULTURE.

Flexibility at its best

1 | INTELLIGENT WIRE MANAGEMENT

Thanks to sophisticated wire management, the cables are concealed beneath the desk top yet easily accessible.



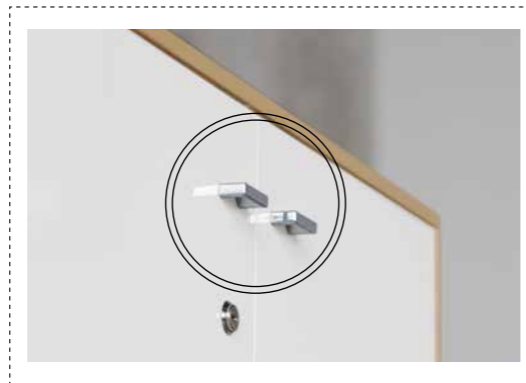
2 | ELEGANT CABLE OUTLET

Workstation cables can be fed through outlets in the desk top and taken to floor level.

Variety of high-quality materials

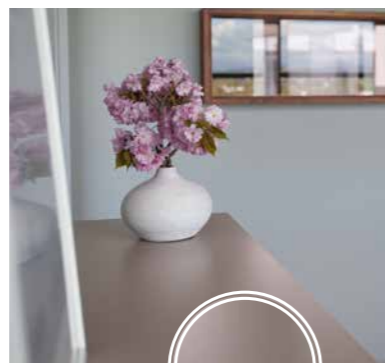
FINE VENEERS

The individual veneer sheets are put together and processed by hand.



HANDLES

There is a model to suit every application and every design.



SOLID COLOUR AND WOOD-EFFECT

There are many on-trend colours and textures that are the perfect match for classic finishes.



LEATHER

Pleasant feel, classy looks and selected colours make for the finest quality.

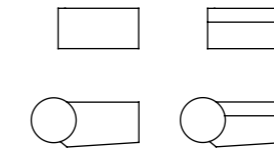
Product overview

MANAGEMENT PRODUCT OVERVIEW



TABLE.MANAGEMENT

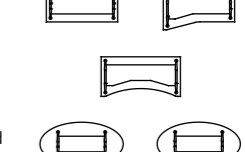
*1, 2, 3, 4



T-leg A-leg Slab end leg

SUMMA

*1, 3, 4



Legs/Frame

Frame options

• • •

Free-form frame

Dimensions

Widths

1,600 mm, 1,800 mm, 2,000 mm

• • •

1200 mm, 1600 mm, 1800 mm, 2000 mm

Depths

900 mm, 1000 mm

• • •

800 mm, 1000 mm

Height adjustment

Fixed

720 mm (13 mm top)
732 mm (25 mm top)

• •

720 mm

Height-adjustable

650 - 890 mm (via release levers at each side)

•

Infinitely variable

-

On glides: 700 - 740 mm

Electric motor

650 - 1,250 mm

o

Worktop

Wood-product panel Décor

13 mm and 25 mm, fixed
13 mm and 25 mm, with split sliding top
25 mm with 45° undercut edge

• • •
o o o
o o o

25 mm top with straight
3 mm edge-banding

Wood-product panel Veneer

13 mm and 25 mm, fixed
13 mm and 25 mm, with split sliding top
25 mm with 45° undercut edge

o o o
o o o
o o o

MDF board, 25 mm,
edge 45°, undercut with edge-banding

Glass top

-

Electrics

Horizontal

Clip-down cable tray,
cable tray in 2 depths: 67 mm and 100 mm

o o o

Clip-down cable tray

Vertical

Cable chain
Cable management, with split top

o o o

Cable chain

Cut-outs

Cable grommet

o o o

grommets

Accessories

At sides

CPU holder, printer tray

o o o

CPU-holder, side-mounted printer tray

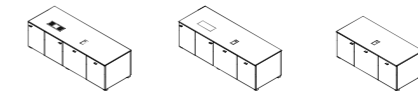
Below the top

Perforated steel modesty panel

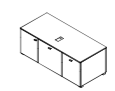
o o o

Perforated steel modesty panel

Technical pedestal

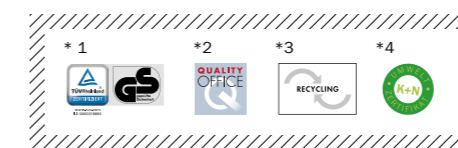


1800 mm as desk support (T-leg)
1800 mm as desk support (A-leg, slab end leg)
1400 mm for stand-alone use



1400 mm For stand-alone use

• Standard o Optional



Deutschland

König + Neurath AG
Büromöbel-Systeme
Industriestraße 1–3
61184 Karben
Tel.: +49 (0)6039 483-0
Fax: +49 (0)6039 483-214
e-mail: info@koenig-neurath.de
www.koenig-neurath.de

Great Britain

K + N International
(Office Systems) Ltd
52 Britton Street
London EC1M 5UQ
Tel.: +44 (0)20 74909340
Fax: +44 (0)20 74909349
e-mail: info@koenig-neurath.co.uk
www.koenig-neurath.co.uk

Nederland

König + Neurath Nederland
Office Furniture
Beethovenstraat 530
1082 PR Amsterdam
Tel.: +31 (0)20 4109410
Fax: +31 (0)20 4109419
e-mail: info@konig-neurath.nl
www.konig-neurath.nl

France

König + Neurath AG
Showroom Paris
66, rue de la Victoire
75009 Paris
Tel.: +33 (0)1 44 63 23 93
Fax: +33 (0)1 44 63 23 97
e-mail: info@koenig-neurath.fr
www.koenig-neurath.fr

Schweiz

König + Neurath (Schweiz) GmbH
Büromöbel-Systeme
St. Gallerstrasse 106 d
CH-9032 Engelburg / St. Gallen
Tel.: +41 (0)52 770 22 42
e-mail: info@koenig-neurath.de
www.koenig-neurath.de